



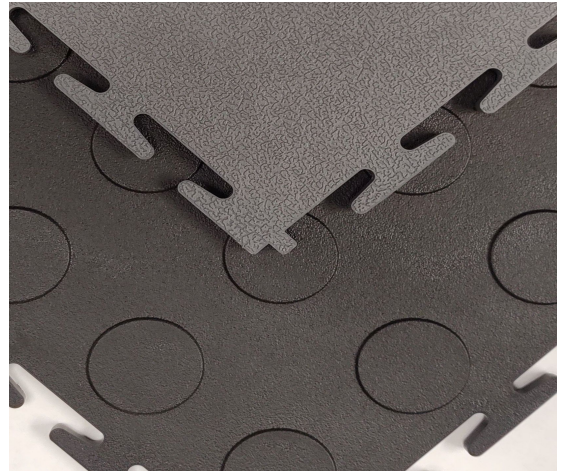
SelecTile Flooring™

SelecTile makes installation a snap.

SelecTile vinyl floor tiles are made using recycled PVC materials and have a unique interlocking edge design to eliminate the need for adhesives, making installation quick and inexpensive. Non-porous, flexible and durable, SelecTile remains in-place even with heavy traffic and abuse. It can be installed directly over damaged or problem floors with minimal subfloor prep, is resistant to most solvents, chemicals and abrasion, and is easy to maintain, reconfigure or remove.

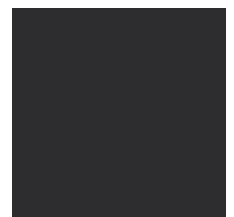
Selectile is built for TOUGH environments.

SelecTile is designed for use in heavy-duty, high-traffic industrial, manufacturing, institutional, transportation, shipping, warehouse and similar areas. It withstands pointloads of up to 1,000 p.s.i., including forklifts, pallet jacks, carts and other wheeled conveyances and requires minimal maintenance.



Patterns and Colors

SelecTile Industrial is available in smooth and coin in seven standard colors. For custom colors, contact SelecTech for minimum order quantity requirements.





SelectTile Flooring Specifications

CONSTRUCTION

Dimensions (finished surface)	23.75" x 23.75" 60.3 cm x 60.3 cm
Coverage	60.3 cm x 60.3 cm 3.92 sq. ft./tile 0.36 sq. meter/tile
Thickness	0.22" 5.6mm
Weight	6.0 lbs/tile

PERFORMANCE CHARACTERISTICS

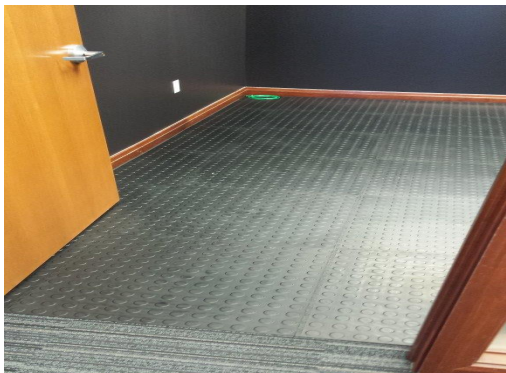
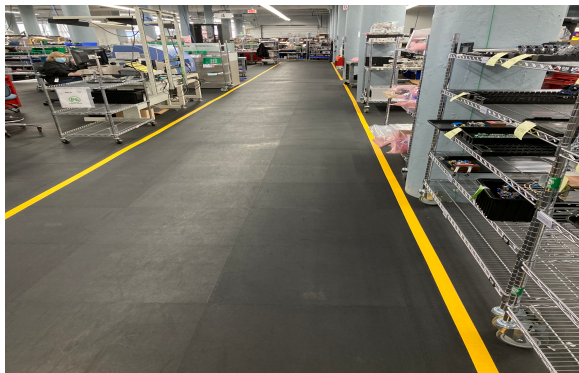
Noise Reduction	Excellent
Underfoot Comfort	Superior
Stain Resistance	Excellent
Maintenance	No Wax
Made in USA	
Warranty	10-Year Commercial

PHYSICAL PROPERTIES

Abrasion Resistance	<0.01 gram weight loss ASTM D-3389
Coefficient of Friction Conforms to ADA Recommendations	0.70 ASTM D-2047
Critical Radiant Flux Meets Class I Fire Rating	>0.45 watts/cm ² ASTM E-648
Smoke Density	<450
Static Load Resistance	1000psi ASTM F-970

ENVIRONMENTAL QUALITY

Recycled Content	20%
Air Quality	Meets Requirement for LEED EQc4.2 Low - emitting materials - flooring systems.
Quality System	ISO 9001
Recyclability	100% Portable & Reusable. Can also be sent back for Recycling using SelectTech's SelectAgain™ Program.



Installation: All SelectTech flooring products are interlocking floor tiles. SelectTiles cover 23.75" x 23.75" or 3.92 square feet per tile. Due to the large tile size, use a waste/contingency factor of between 3% and 5% when estimating a job. A plastic deadblow mallet should be used for joining tiles. Use of a vinyl tile cutting tool or saw is required for cutting around obstacles. All SelectTech flooring products are free-lay systems that do not require adhesives and may be installed over concrete, wood, asbestos tile, rubber, vinyl composite tiles and other standard floors. A 1/4" (6.35 mm) gap around the perimeter should be left to allow for expansion and contraction. See SelectTile Installation Guides or go to www.freestyleflooring.com for additional instructions.

Maintenance: SelectTech flooring products can be cleaned with neutral cleaners using a mop or sponge or with a power scrubber or buffer equipped with a white pad. See SelectTile Maintenance Guide or go to www.freestyleflooring.com for additional instructions.

Maintenance: SelectTech flooring products are backed by a 10-year limited warranty against wear and a one-year warranty against manufacturing defects. **Unlike many other flooring products, warranties on SelectTech flooring products are NOT VOIDED because of problems caused by moisture and hydrostatic pressure in the subfloor; or by buyer's failure to use manufacturer's specified adhesive.** See www.freestyleflooring.com for warranty details.