



ECOLOCK™

EcoLock Modular Tile Step into the Future

COMMERCIAL INTERLOCKING FLOORING

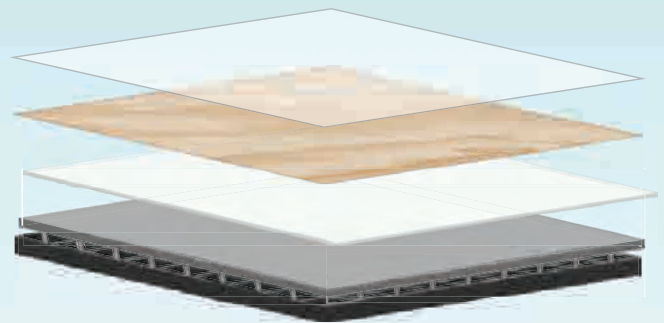
EcoLock™ is a sustainable, modular resilient floor tile made with bio-based polymers, natural minerals, and a patented vertical interlocking seam technology designed for commercial and residential use.

StainStop™ Bio-Based Urethane/
No Wax Commercial Wear Layer

Decorative Print Film Layer

Stabilizing Layer

ToughFlex™ Performance Backing
with Zipper Interlock



KEY BENEFITS

- Easy DIY installation - Saves time and money.
- Installs over existing floors - No removal required.
- Requires minimal floor preparation.
- Installs in an occupied environment using L.I.F.T installation - No dust, disruption, or downtime.
- No adhesives required - No bonding issues.
- Tiles are 100% waterproof.
- Patented "zipper" interlock offers a water tight seam using Seam Sealer.
- Built-in underlayment for underfoot comfort and sound reduction.
- Extremely low absorption rate - Non-porous surface resists stains and infectious organisms.
- Adds excellent value to a LEED Scorecard.
- No PVC, ortho phthalates, chlorine, formaldehyde or halogens.
- 70% bio-based and natural mineral content.
- "SelectAgain" sustainability program - Recycles EcoLock Flooring using Selectech's "Polymer to Polymer" lifecycle process - Old tiles become new tiles.

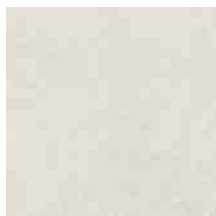
Manufactured in the USA with domestic and imported materials



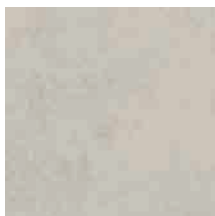
The "Holy Grail" of PVC-Free Floor tiles offers these elusive benefits vs. PVC

- *Equal to, or better performance than premium vinyl products*
- *Attractive, high-resolution design offerings*
- *Excellent value versus vinyl on a cost benefit analysis*
- *Superior installation and maintenance values*

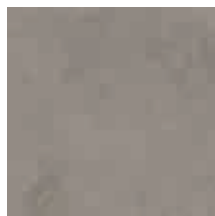
Standard Patterns



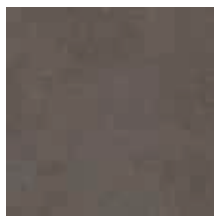
ST01 Chalk



ST02 Pearl



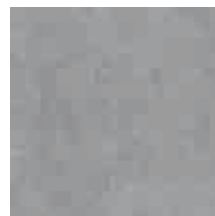
ST04 Mushroom



ST08 Mink



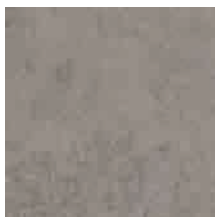
ST07 Leit Gray



ST06 Silver Cloud



ST03 Oyster



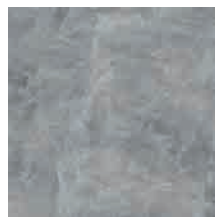
ST05 Pewter



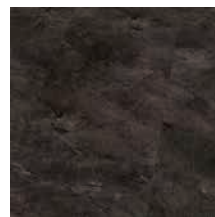
CON02 Lone Star Slate



CON01 Monterey Slate



CON04 Cape Cod Slate



CON05 Pittsburgh Slate

Environmental Characteristics

- **Red List Free**
- **Contributes to LEED v4 Points**
 - Indoor Environmental Quality
 - EQc2; Low Emitting Material – MAS Green Certified
 - EQc9; Acoustic Performance – Increase in IIC of 18 Decibels, ASTM E2179
 - Materials and Resources
 - MRc4; Sourcing of Raw Materials
 - MRc4; Extended Producer Responsibility – SelectAgain Take Back Program
 - MRc4; Bio-Based Materials, 13% Bio-Based, per ASTM D6866
 - Material Ingredients
 - MRc5; Material Ingredient Reporting – Health Production Declaration (HPD) Available
 - Innovation
 - IN; Innovative interlock system allows for installation without adhesives, portability and future use of the flooring

EcoLock flooring has the potential to contribute to points in LEED v4. However, LEED v4 credits are earned based on the calculated, combined performance of all the products used on a project.

Performance Characteristic

- Excellent Noise Reduction
- Superior Underfoot Comfort
- Excellent Stain Resistance
- No Wax Maintenance
- 10-Year Commercial Warranty
- Made in the USA with domestic and imported materials

Construction

Dimensions (finished surface)	18.5" x 18.5" 47.0cm x 47.0cm
Coverage	2.38 sq ft/file 0.22 sq meter/tile
Thickness	0.34" 7.9mm
Commercial Wear Surface	20 mil (0.5 mm) Ceramic/Urethane Wear Coat
Weight	5.2 lbs/tile

Physical Properties

Abrasion Resistance:	<0.01 gram weight loss ASTM D-3389
Coefficient of Friction Conforms to ADA Recommendations	0.92 ASTM D-2074
Critical Radiant Flux Meets Class 1 Fire Rating	>0.45 watts/cm ASTM E-648
Smoke Density	≤450 ASTM E-662
Fungi growth	No Growth ASTM G21
Static load	0.005" residual indentation at 450lbs
Color stability – heat	Δ (Delta) E < 0.1 ASTM F1514
Color stability – light A	Δ (Delta) E < 0.1 ASTM F1515
UV Resistance	≥7 EN ISO 105-B02
Sound transmission	Δ (Delta) IIC 18 ASTM E2179
Dimensional stability	< 0.2% ASTM F2199
Chemical resistance	Exceeds standard specifications ASTM F925